



REAR ELEVATION
1/4" = 1'-0"



RIGHT ELEVATION
1/4" = 1'-0"



LEFT ELEVATION
1/4" = 1'-0"



FRONT ELEVATION
1/4" = 1'-0"

1" x 8" and 1" x 3" Rakes
8" overhang wrapped in aluminum

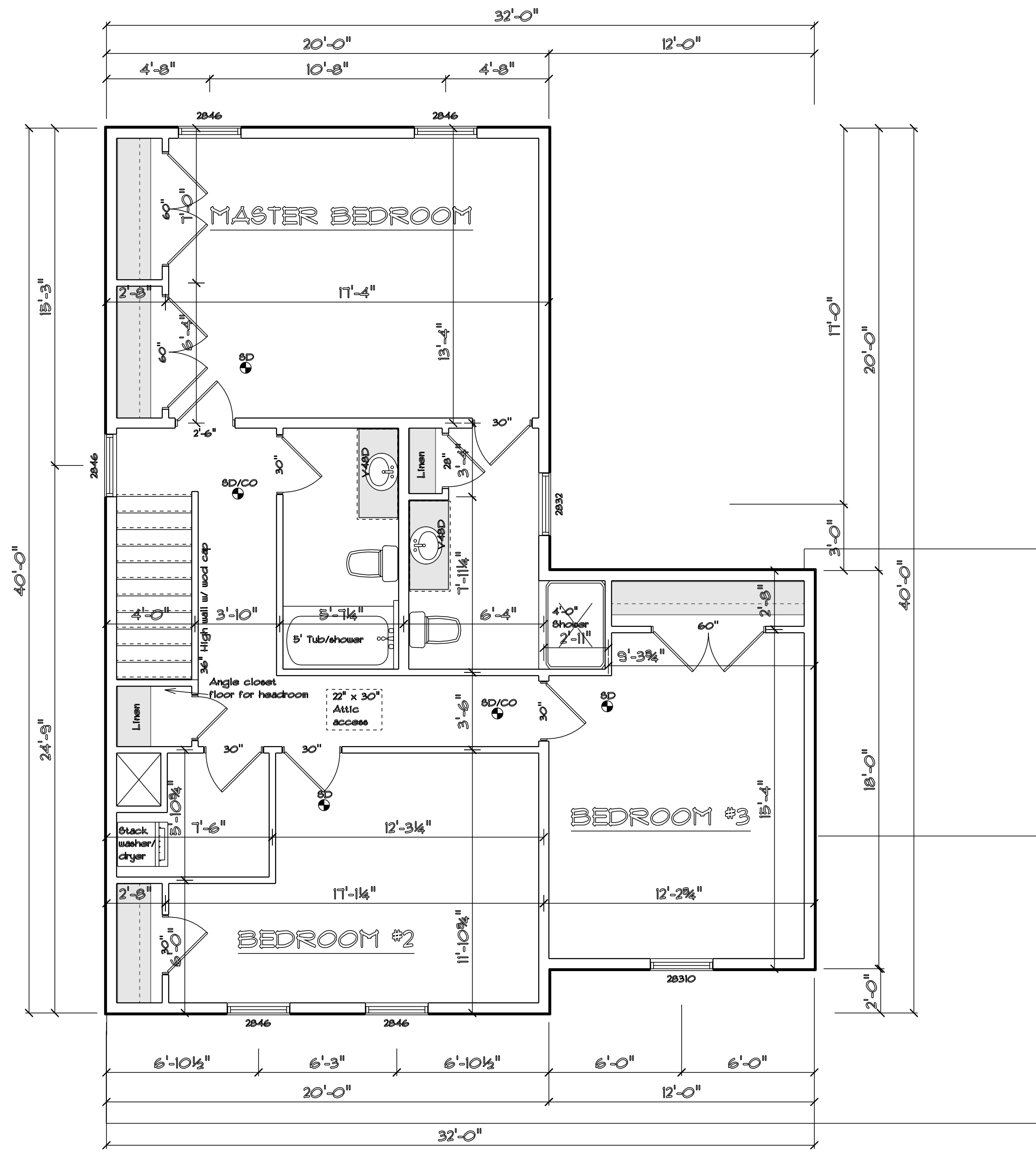
Aluminum wrapped fascia and
vinyl soffit

Vinyl siding

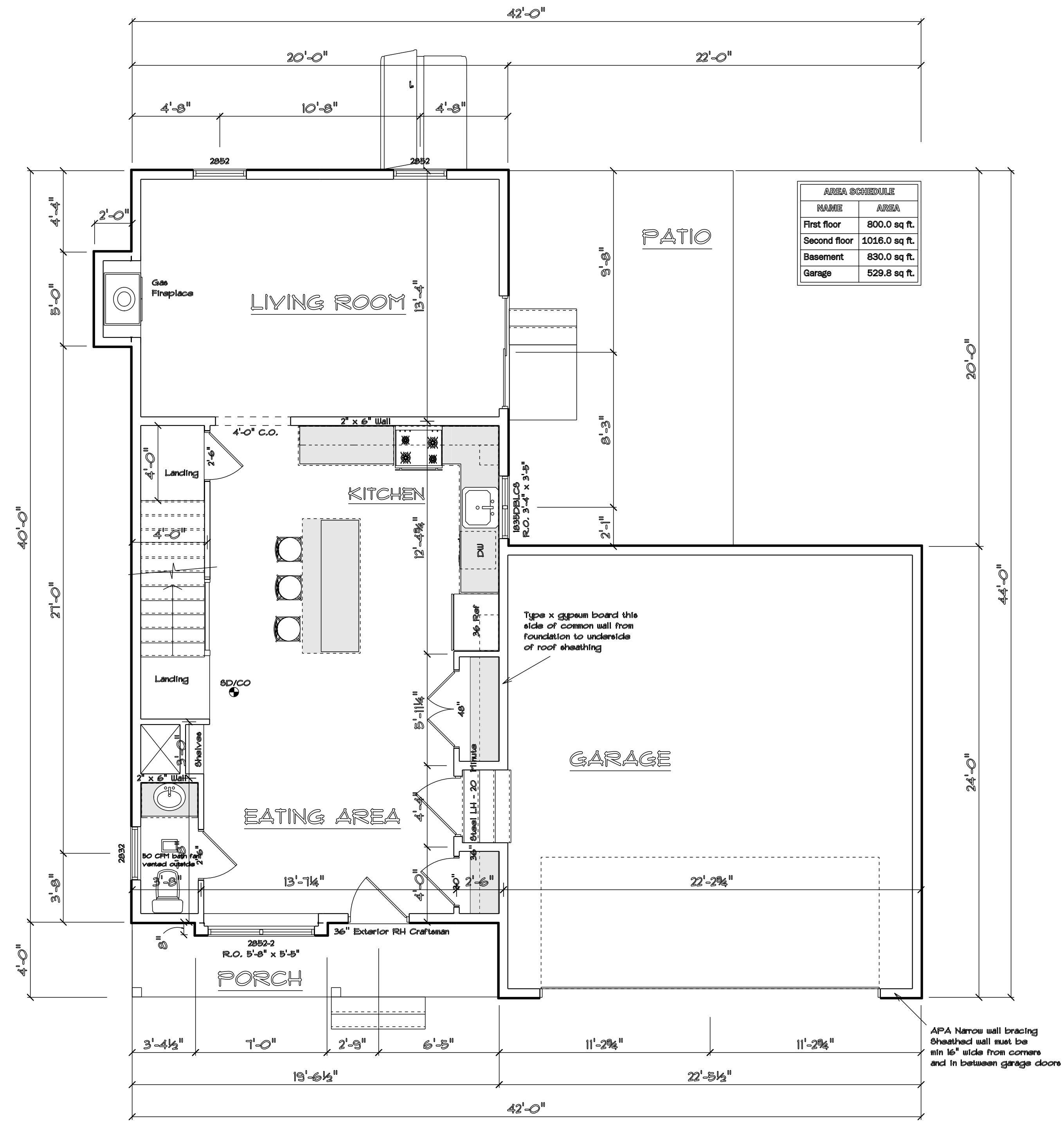
30 Year architect shingles
w/ 15# felt paper



DATE: 2/29/2020
REV:
REV:

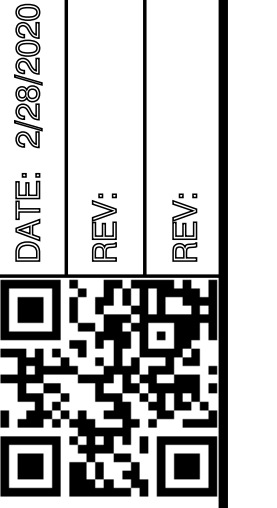


SECOND FLOOR PLAN
1/4" = 1'-0"



FIRST FLOOR PLAN
1/4" = 1'-0"

AREA SCHEDULE	
NAME	AREA
First floor	800.0 sq ft.
Second floor	1016.0 sq ft.
Basement	830.0 sq ft.
Garage	529.8 sq ft.

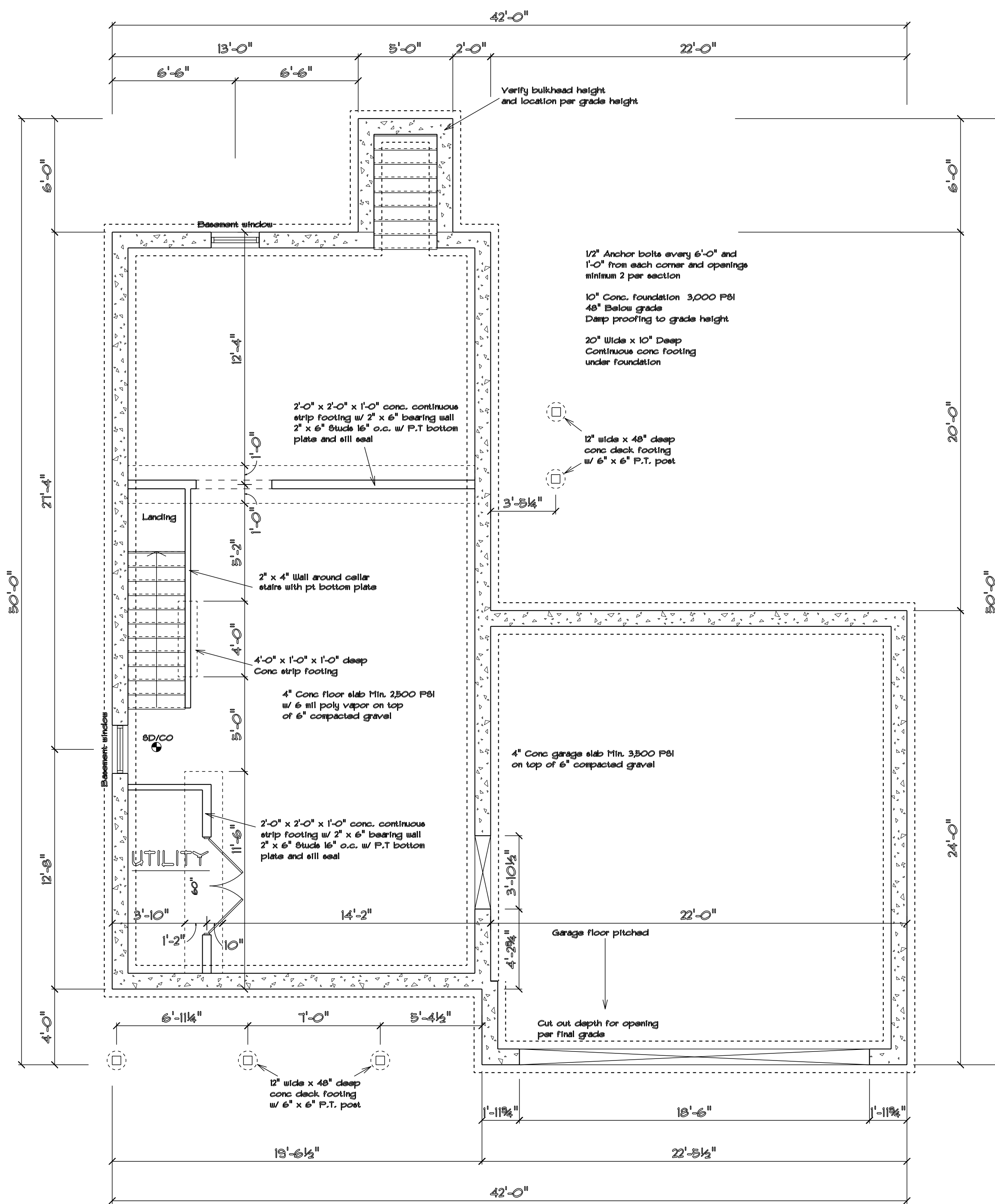


P.L.A.N.S. COMPANY
PATRICK LOUGHLIN'S ARCHITECTURAL NETWORKING SYSTEMS
WWW.PLANSCO.NET
508-397-1317

CARROLL BUILDERS CORP.
Foxboro Massachusetts

24" x 36" PAPER

24" x 36" PAPER



FOUNDATION PLAN
1/4" = 1'-0"